

UniLox® post

Posts

Profiles posts galvanised and polyester coated which allow for a universal installation method and can be used with multiple panels.

Product detail



BENEFITS

- Very attractive symmetrical shape
- Fixators can be equipped with security bolts for an enhanced security level
- Installation methods: Post - Panel - Post or Post - Post - Panel
- Steps for slopes: 2,5 cm
- Ideal for all panels in medium security
- Perfect for installation with concrete plate
- Quick installation

Profile

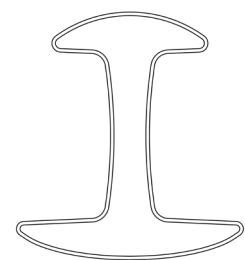
- Tubular post, profiled in "H" shape, plate thickness: 1,00 mm
- With 3 pre-drilled holes for fixing of the special metal security clips with bolts
- With punched holes for positioning and fixing of the panels by means of fixing clips
- Cross section of the post: 70x64 mm
- II/V: 5.08 cm³ | Yield strength: 280 MPa | Relative strength: 142

Accessories

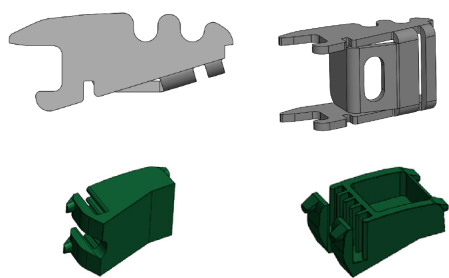
- Security fixation system: plastic coated metal clip with as an option stainless bolt with nut with break-off head (depending on the installation type use the correct length of bolts (M6x/50 or M6x60, see installation manual for more details)
- Metal or Polyamide fixing brackets depending on installation and panel type
- Installation tongs
- Floor plate
- Connection piece to create bent arm for panels or extension
- Single or double bent arms

Coating technique and colours

Galvanised: inside and outside and polyester coated (minimum 60 microns).
RAL 6005 (Green), RAL 7016 (Grey), RAL 9005 (Jet Black) and RAL 9010 (Pure White). Other colors are available on request.



Fixators



Compatible products

- All Nylofor panels
- CreaZen
- Decofor
- Securifor
- Bekafor Classic Panels

ASSORTMENT UNILOX® POSTS

| Panel height mm | Post length mm | | Number of fixators/post (intermediate/corner post*) |
|--------------------|-------------------|-----------|--|
| | Concrete | Baseplate | |
| 630 | 1075 | 675 | 2 x 2 |
| 830 | 1275 | - | 2 x 2 |
| 1030 | 1475 | 1075 | 2 x 2 |
| 1230 | 1675 | 1275 | 2 x 3 |
| 1430 | 1975 | 1475 | 2 x 3 |
| 1530 | 1975 | 1575 | 2 x 3 |
| 1630 | 2175 | 1675 | 2 x 3 |
| 1730 | 2175 | 1775 | 2 x 3 |
| 1830 | 2475 | - | 2 x 4 |
| 1930 | 2475 | 1975 | 2 x 4 |
| 2030 | 2575 | 2075 | 2 x 4 |
| 2230 | 2775 | - | 2 x 4 |
| 2430 | 3175 | 2475 | 2 x 4 |

* end post = only half of the numbers of fixators necessary

Europe
Blokkestraat 34b
B-8550 Zwevegem
Tel: B: +32 56 73 46 46

USA
3309 SW Interstate 45
Ennis, TX 75119
Tel: +1 972 878 7000

Middle East
P.O. Box 293517 DAFZA, Building E 5,
Block A 8th Floor, Office 802
Tel: +971 04 6091122

Africa
B10, Bergriver Business Park
Paarl, 7646
Tel: +27 021 868 7300